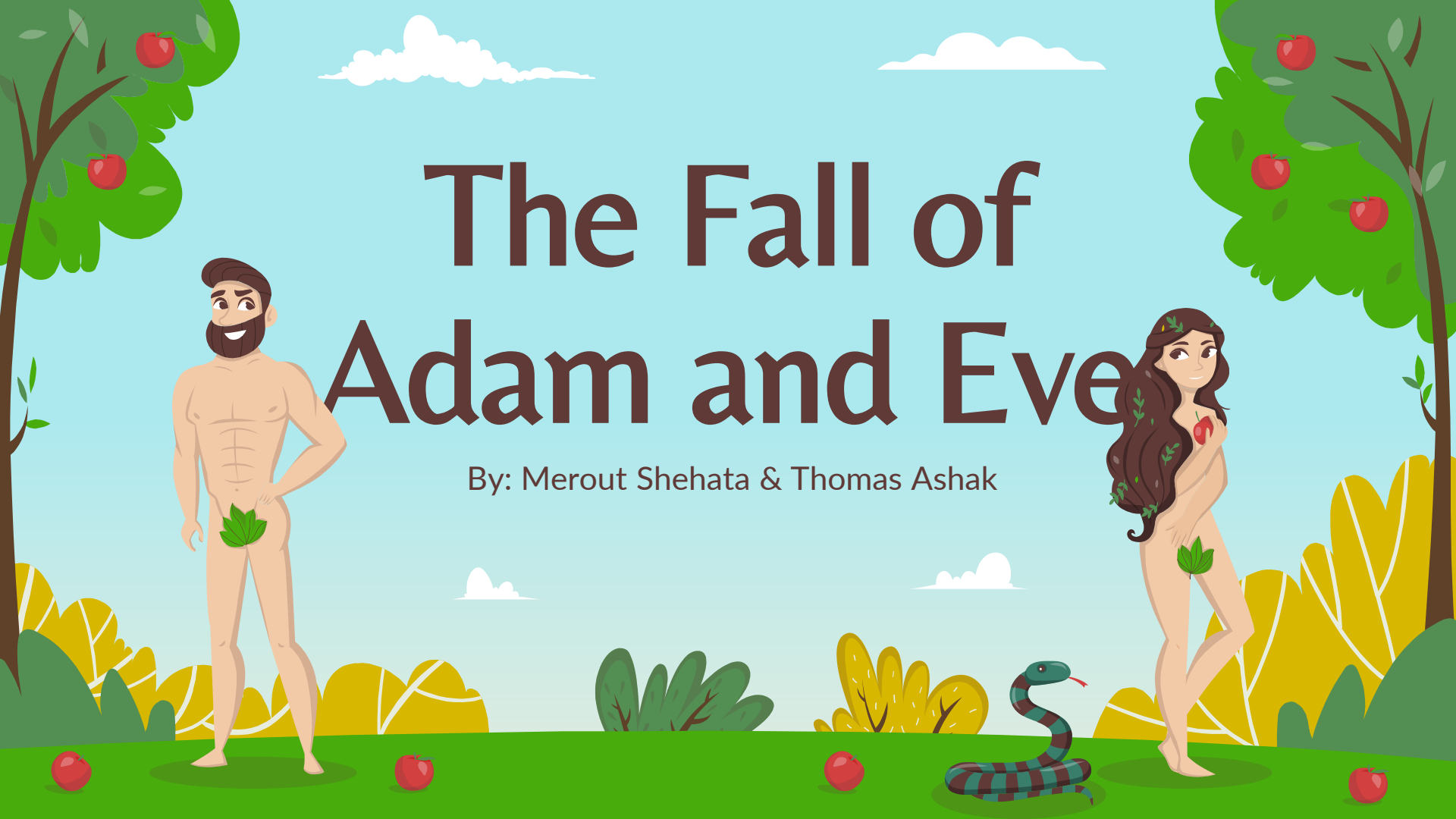


The Fall of Adam and Eve

By: Merout Shehata & Thomas Ashak





Introduction

The Fall of Adam and Eve began due to them eating a fruit from the Tree of Knowledge of Good and Evil. Their eating from the the Tree of Knowledge of Good and Evil caused the fall to begin because they disobeyed God's Words.

Table of contents

01

Adam and Eve
Before the Fall

03

Lessons to Learn

02

The Sins of Adam
and Eve

04

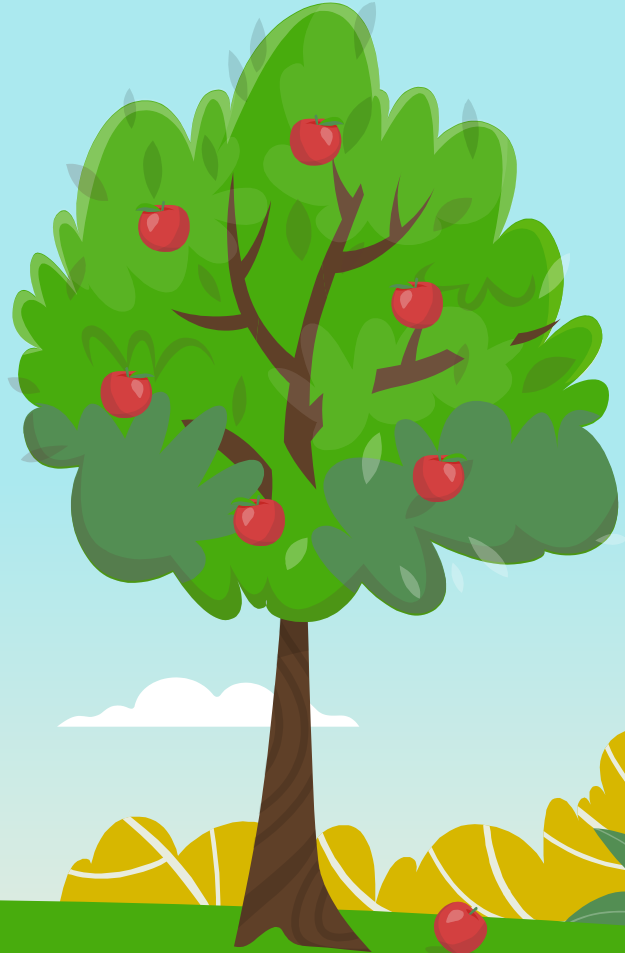
Consequences of
the Fall of Adam
and Eve

05

Conclusion

01

Adam and Eve Before the Fall



01

Main Things We Need to Know before the fall

Pt. 1

- They were created (not born).
- They did not inherit.
- They were new human creatures on the way that God wanted.
- They new human creatures on the way that God wanted.

01

Main Things We Need to Know before the fall

Pt. 2

- They were simple never knew the evil before.
- God blessed them and was with them all the time.
- They lived in full respect from God
- They were working together in governing other creatures. (Gen 2;21, 22)



01

Main Things We Need to Know before the fall Pt. 3

- They were created after God prepared for them everything.
- They were so happy in the garden with the fellowship with good they never missed any thing they desired to have



01

Main Things We Need to Know before the fall Pt. 4

- They had great knowledge.
- They lived vegetarian so no need that they kill to eat. Even all animals were vegetarian.

01

If still curious, Scan QR Code



02

The Sins of Adam and Eve



02

Main things We need to know about the sins of Adam and Eve

- They started to use their freedom of will as an advantage/in bad ways
- Many people think that adam and Eve fell in one sin. They actually fell in more than 27 sins. Let's mention 6 of them.



02

6 of the 27 Sins

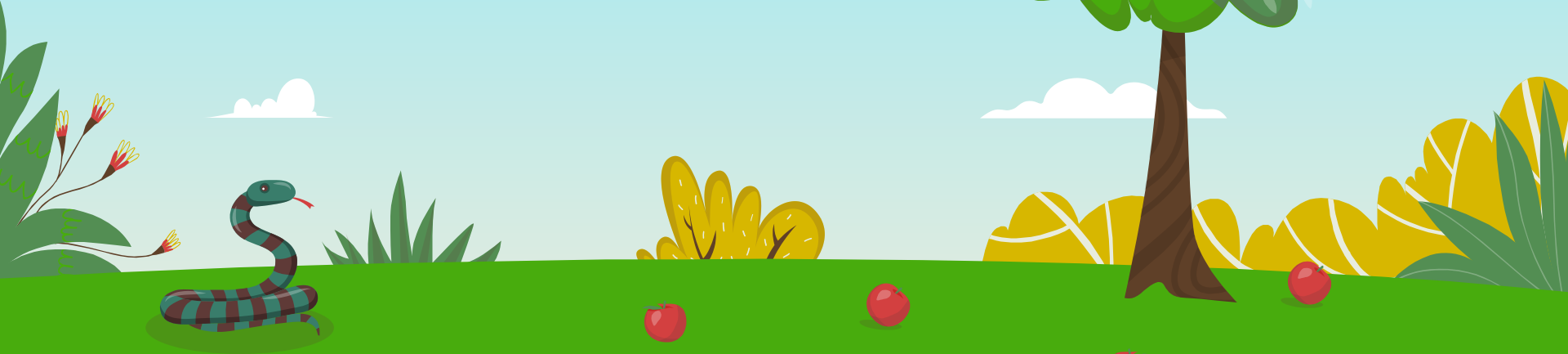
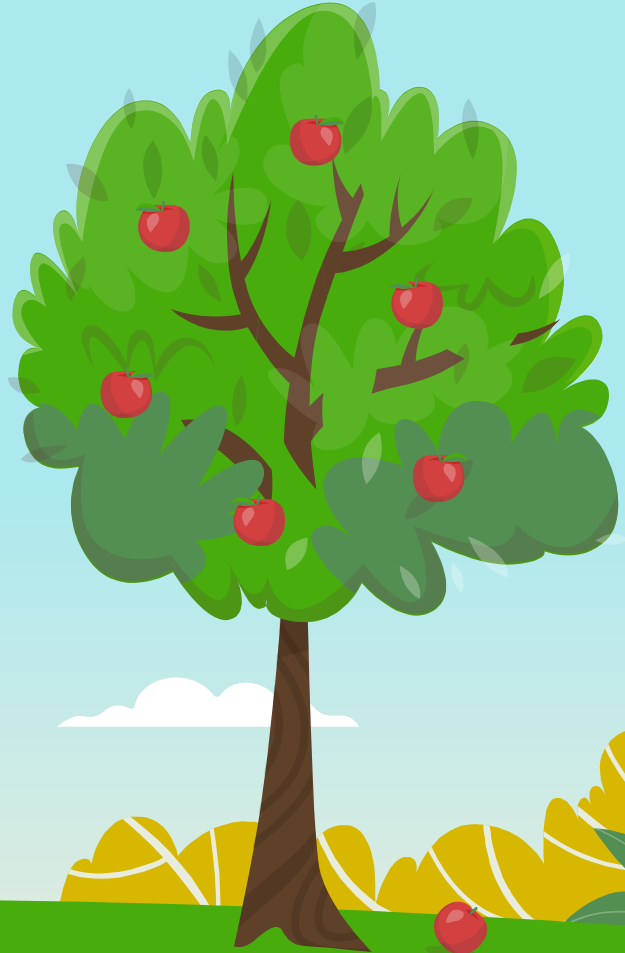
- Fell in the fear of God.
- The sin of fear.
- The sin of escaping from God.
- Never judged themselves.
- Not blaming themselves.
- Sin of finding an excuse

02

If still curious, Scan QR Code



03 Lessons To Learn



The background is a light blue sky with a green ground. On the left, there is a tree with green leaves and a brown trunk, with a brown circle containing the number '03' on its branch. On the right, there is another tree with green leaves and a brown trunk, with several red apples hanging from its branches. In the foreground, there are several red apples on the green ground. There are also some white clouds in the sky.

03

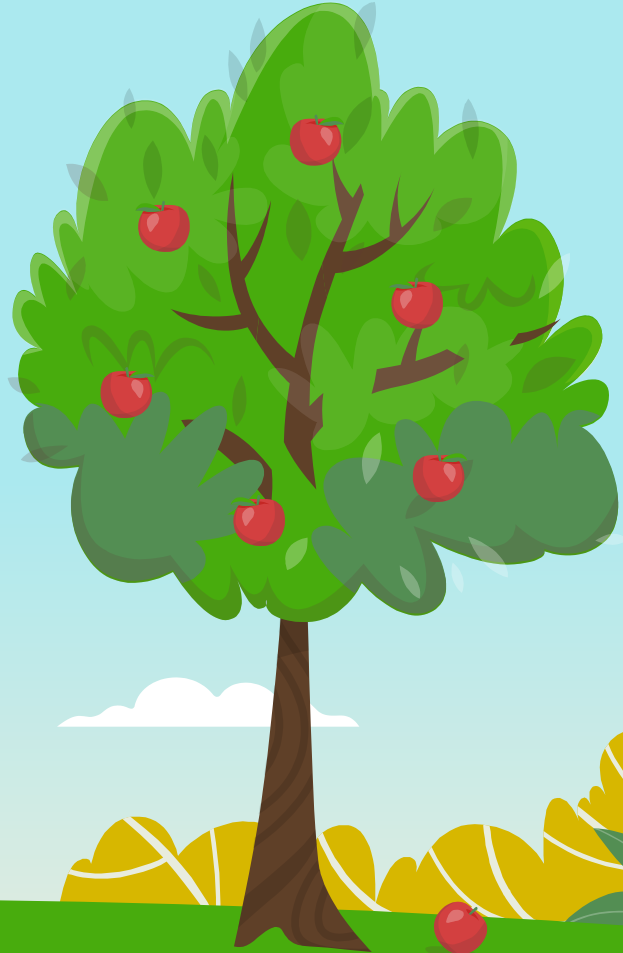
Main Lessons To Learn

When you sin, that sin is linked to many other sins.

Live of cautiousness, and carefulness of judging ourselves and offer repentance. Watch all deeds

04

Consequences of the fall of Adam and Eve



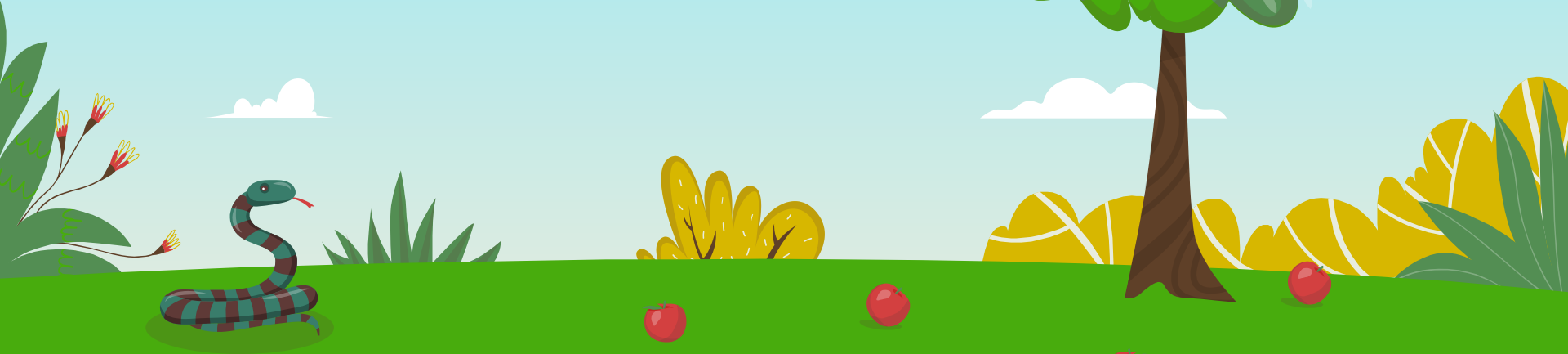
04

Main things to learn from the Consequences of the Fall of Adam and Eve

- Curse on the serpent and on Adam and Eve, and on all the Earth (read Gen 3 and 4 for more information).
- Death to all humanity: Adam died both spiritually and earthly.
- Corruption of the human nature.
- Tribulation follows fear, stress, shame, spiritual diseases.
- Bodily illnesses.
- Lost the Godly image.

05

Conclusion



The background features a light blue sky with a few white clouds. On the left and right sides, there are stylized green trees with red apples. At the bottom, there is a green grassy field with a few more red apples and some small green plants. A dark brown circle containing the number '05' is positioned in the upper left corner.

05

Conclusion

The Fall of Adam and Eve is the event that led to the beginning of earthly sins.

This event required the coming of the Messiah for the redemption of our sins and for our salvation.



Any Questions?

No hard ones, please

A vibrant, stylized illustration of a landscape. On the left, a large tree with a thick brown trunk and a full, rounded canopy of bright green leaves stands prominently. Several red apples are scattered among its branches. To its right, another tree with a similar green canopy is partially visible. In the foreground, a bright green grassy field is dotted with several red apples. On the far right, a third tree with green leaves and red apples is partially cut off by the edge of the frame. The sky is a clear, light blue, featuring a single, soft white cloud near the top center. The overall style is clean and modern, with flat colors and simple shapes.

Thanks!